



DEPARTMENT OF POWER, ELECTRONICS AND TELECOMMUNICATION ENGINEERING



ABOUT SERBIA...



- oSerbia has more than 7 million citizens.
- oThe capital is Belgrade with population more than 1.5 million.
- oThe country is famous for delicious food, pleasant people, breath-taking landscapes, hospitality.



CITY OF NOVI SAD

- Capital of the northern Serbian province of Vojvodina
- The second largest city in Serbia (after Belgrade)
- Population ~ 450.000
- Historic Austro-Hungarian Fortress on Danube
- In Novi Sad lived Albert Einstein with his spouse Mileva Marić



UNIVERSITY OF NOVI SAD



- is the second largest university in the country;
- comprises 14 faculties located in four cities around the Vojvodina province: Novi Sad, Subotica, Sombor and Zrenjanin.
- 50.000 undergrad students
- 5.437 grad students
- 5.000 academic staff
- Campus close to city centre, fortress and Danube (large sandy beach)



FACULTY OF TECHNICAL SCIENCES



- Is the largest faculty of the University of Novi Sad
- It was founded on 18th May 1960 as the Faculty of Mechanical Engineering.
- Faculty is accredited for conducting educational activities on 90 study programmes, from that study programmes are accredited to teach in English.
- Faculty comprises 13 departments, 10 administrative units and 33 research centers.





DEPARTMENT OF POWER, ELECTRONIS AND TELECOMMUNICATION ENGINEERING

plays a leading role in the technological development of Vojvodina and Serbia by educating highly competent engineers and researchers and providing new fundamental and applied knowledge in the field of electrical engineering and information technology in accordance with the highest European standards.





DEPARTMENT OF POWER, ELECTRONIS AND TELECOMMUNICATION ENGINEERING

Consists of 6 chairs:

- Chair of Power Engineering and Applied Software Engineering
- Chair of Power Electronics and Converters
- Chair of Electronics
- Chair of Telecommunications and Signal Processing
- Chair of Electrical Measurement
- Chair of Theoretical Electrical Engineering





DEPARTMENT OF POWER, ELECTRONIS AND TELECOMMUNICATION ENGINEERING

Currently has around 200 employees according
to the following structure:

- Teaching stuff: more than 100
- Assistants: 70
- Laboratory assistants: 16
- Researches: 24
- Administrative staff: 5





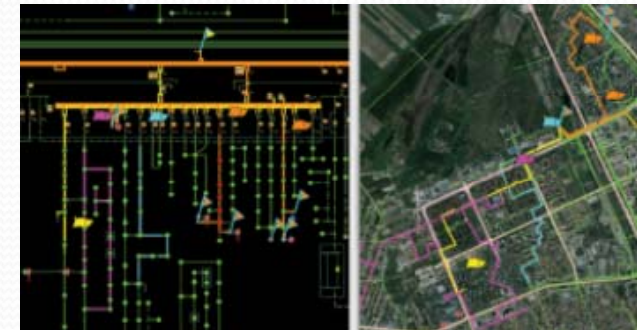
DEPARTMENT OF POWER, ELECTRONIS AND TELECOMMUNICATION ENGINEERING

Internationally successful centers:

- Center for Integrated Microsystems and Components
- Regional Center for Biosensing Technologies (Biosense)
- Center for Metrology
- Center for Renewable Sources and Quality of Electrical Energy
- Centre for intelligent COmmunications, Networking and Information proCessing

Innovation-oriented spin-off companies

- Schneider Electric DMS NS
- Novilog
- Zesium Mobile
- LaCitadelle Ing
- Alfanum Technologies
- Typhoon HIL





DEPARTMENT OF POWER, ELECTRONIS AND TELECOMMUNICATION ENGINEERING

Offers following accreditation study programmes:

UNDERGRATUATED ACADEMIC STUDIES:

- Power Engineering – Power Engineering Systems
- Power Engineering – Power Electronics and Electrical Machines
- Microcomputer Electronics
- Communication Technologies and Signal Processing
- Instrumentation and Measurement
- Applied Software Engineering
- Measurement and Regulation





DEPARTMENT OF POWER, ELECTRONIS AND TELECOMMUNICATION ENGINEERING

MASTER ACADEMIC STUDIES:

- Power, Electronic and Telecommunication Engineering
- Applied Software Engineering
- Measurement and Regulation

DOCTOR ACADEMIC STUDIES

- Power, Electronic and Telecommunication Engineering





DEPARTMENT OF POWER, ELECTRONIS AND TELECOMMUNICATION ENGINEERING

SPECIALIST ACADEMIC STUDIES:

- Power, Electronic and Telecommunication Engineering

UNDERGRADUATE PROFESSIONAL STUDIES:

- Electronics and Telecommunication
- Power Engineering – Renewable Energy Sources

SPECIALIST PROFESSIONAL STUDIES:

- Power, Electronic and Telecommunication Engineering



- New space for DEET - Science Technology Park





DEPARTMENT OF POWER, ELECTRONIS AND TELECOMMUNICATION ENGINEERING

THANK YOU FOR YOUR ATTENTION!

